

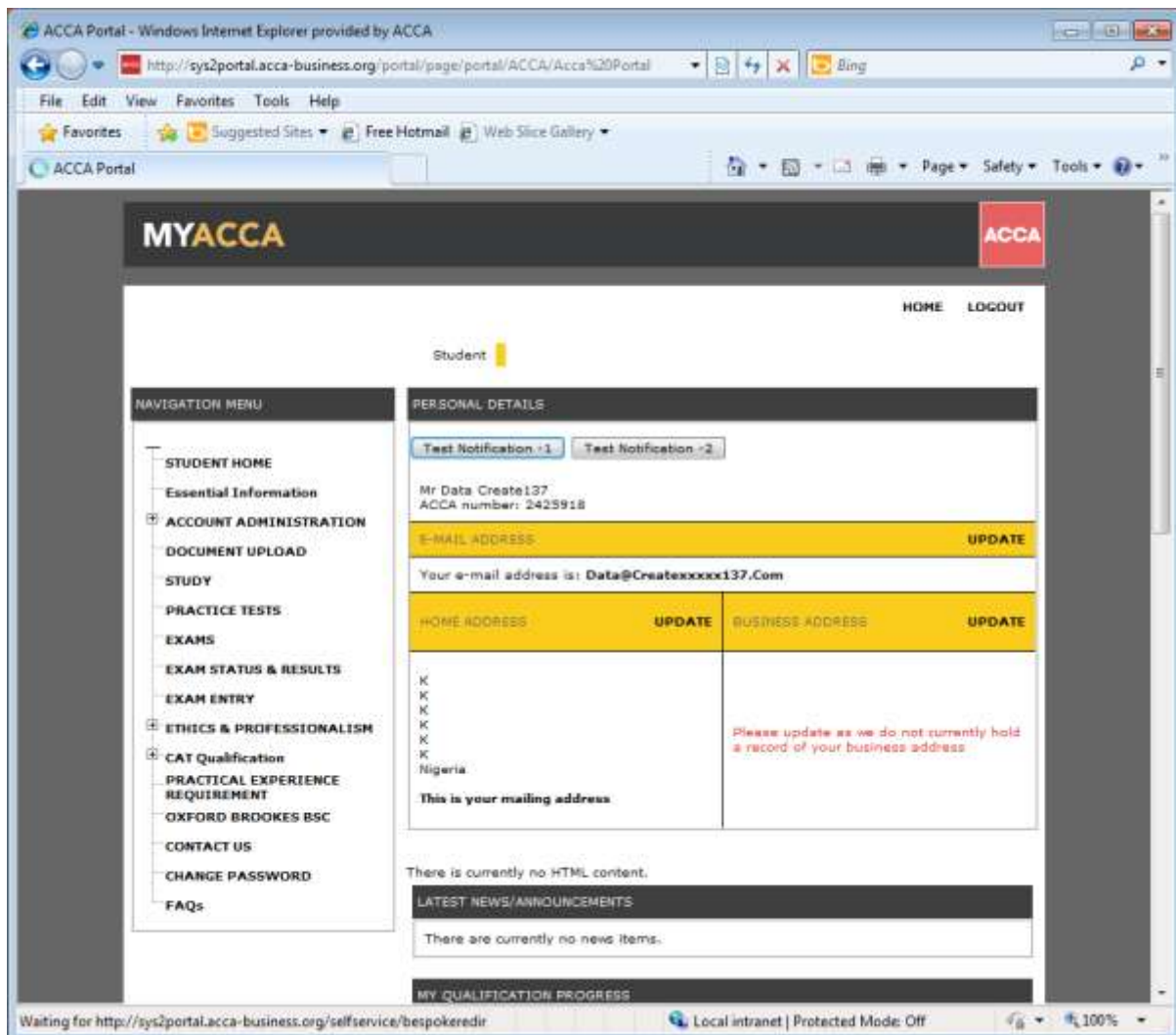
Conditional Exemption Conversion notes

Student changes.

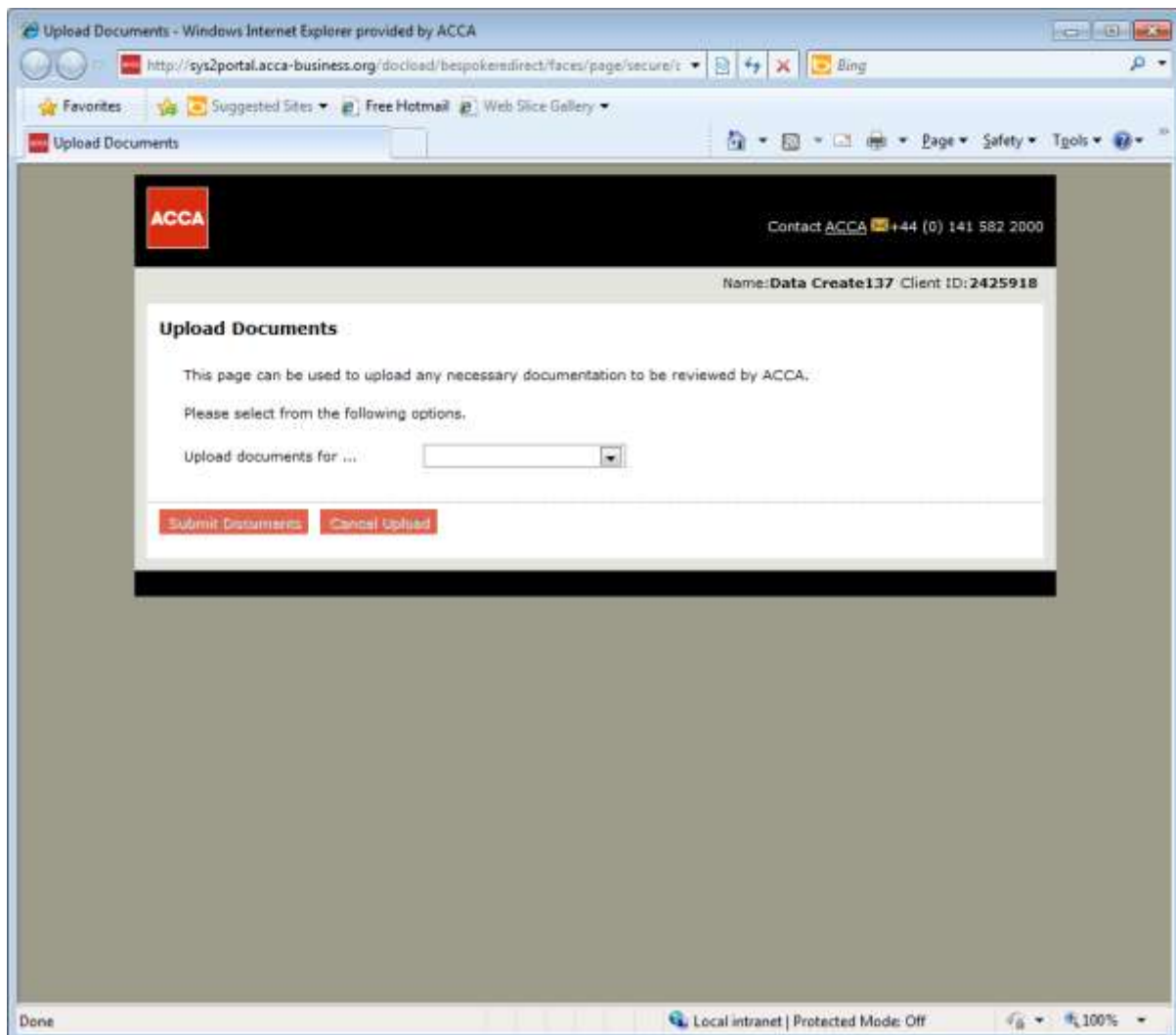
The following notes detail the changes to the Conditional exemption Conversion process for students. The students access MyACCA.

Student Conversion

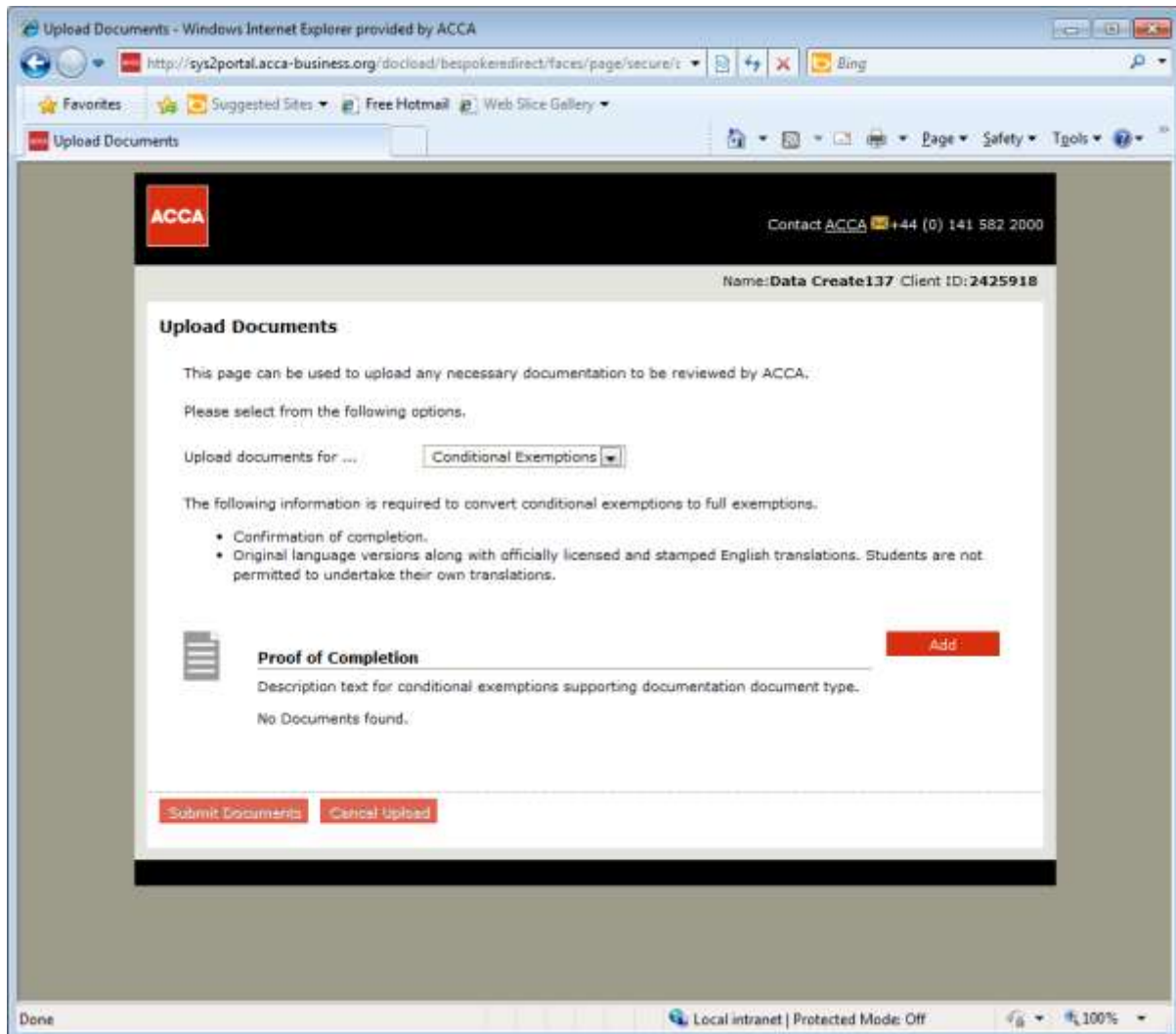
The screenshot shows a Windows Internet Explorer browser window displaying the ACCA MyACCA login page. The address bar shows the URL: https://www.accaglobal.com/ps/ppl/myacca_login.jspt?tsid=jshdypshkew-cj-2-AMZ8881-EEH4C459016C281C348JEPD5C28EE3DE04C85C92851. The page features the ACCA logo and the tagline "ACCA - the global body for professional accountants". A search bar is present. Below the header, there are navigation links: HOME, ABOUT US, NATIONAL SITE, MYACCA, BLOGS, ACCA DISCUSS, ACCA TV, PODCASTS, and ACCA MAIL. A secondary navigation bar includes: JOIN US, STUDENTS & AFFILIATES, MEMBERS, EMPLOYERS, LEARNING PROVIDERS, and GENERAL PUBLIC. The main content area is titled "ACCA HOMEPAGE" and contains a message for "Passed Finalists Database" with a link "click here". A "MYACCA TIP - REMEMBER TO SAVE YOUR CHANGES!" is displayed. A security notice states: "For your personal security, we have installed an activity timer across all our e-business services. This means that you will automatically be logged out of your account after 10 minutes of inactivity. Please remember to save your work before leaving your machine." Below this, a login form prompts users to "Enter your details in the boxes below" with fields for "User ID" and "Password", and a "Login" button. Links for "Forgot your password? Click here" and "Having problems logging in? Click here" are provided. At the bottom, there are links for "CONTACT US", "TERMS", "PRIVACY", "ACCESSIBILITY", "ADVERTISING", and "SITEMAP", along with the text "© 2013 ACCA". The browser's status bar at the bottom shows the URL https://www.accaglobal.com/ps/ppl/myacca_login.jspt?tsid=jshdypshkew-cj-2-AMZ8881-EEH4C459016C281C348JEPD5C28EE3DE04C85C92851, the text "Local intranet | Protected Mode: Off", and the system clock showing "11:01 01/01/2013".



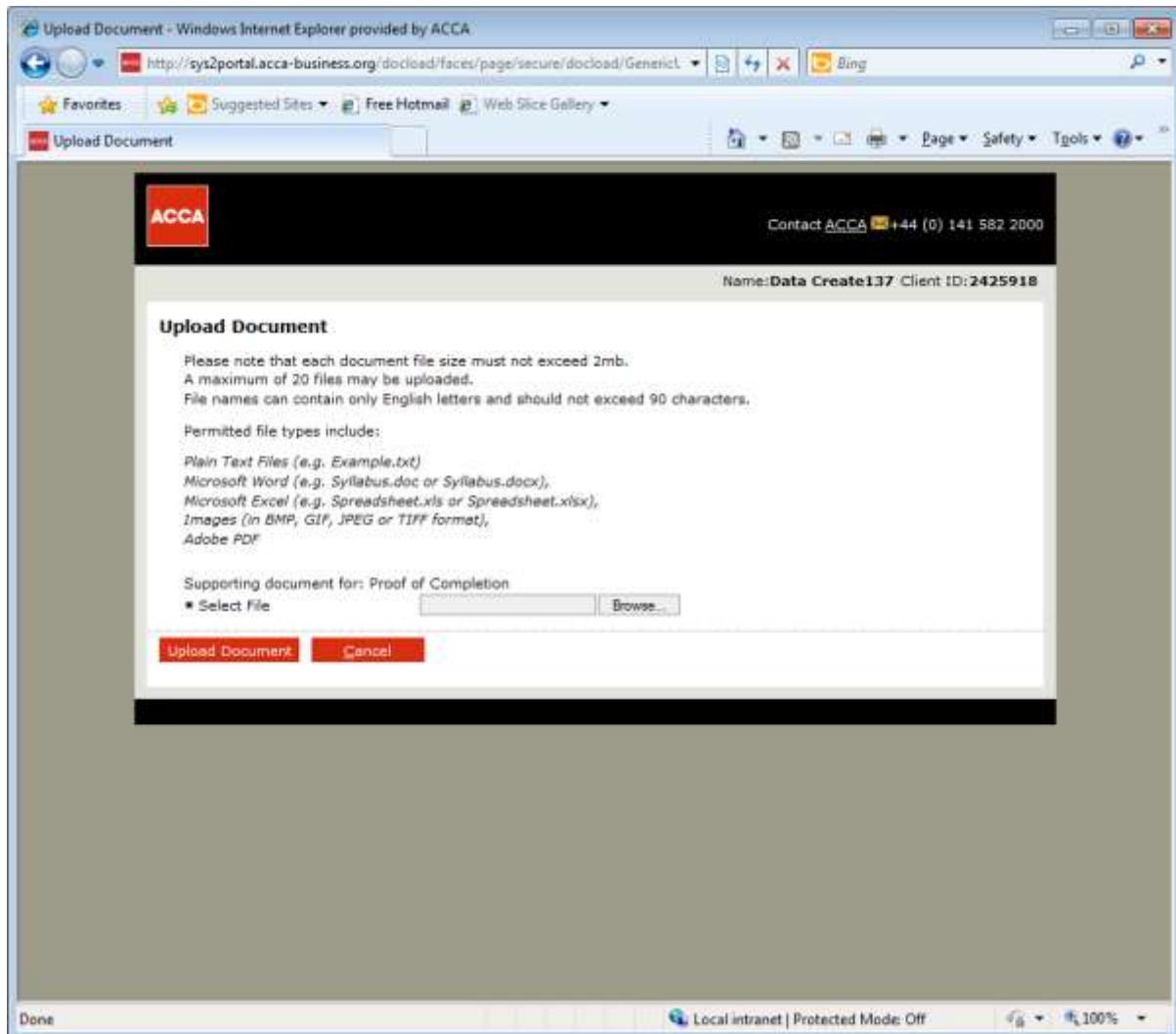
Click doc upload - only shown to CE students



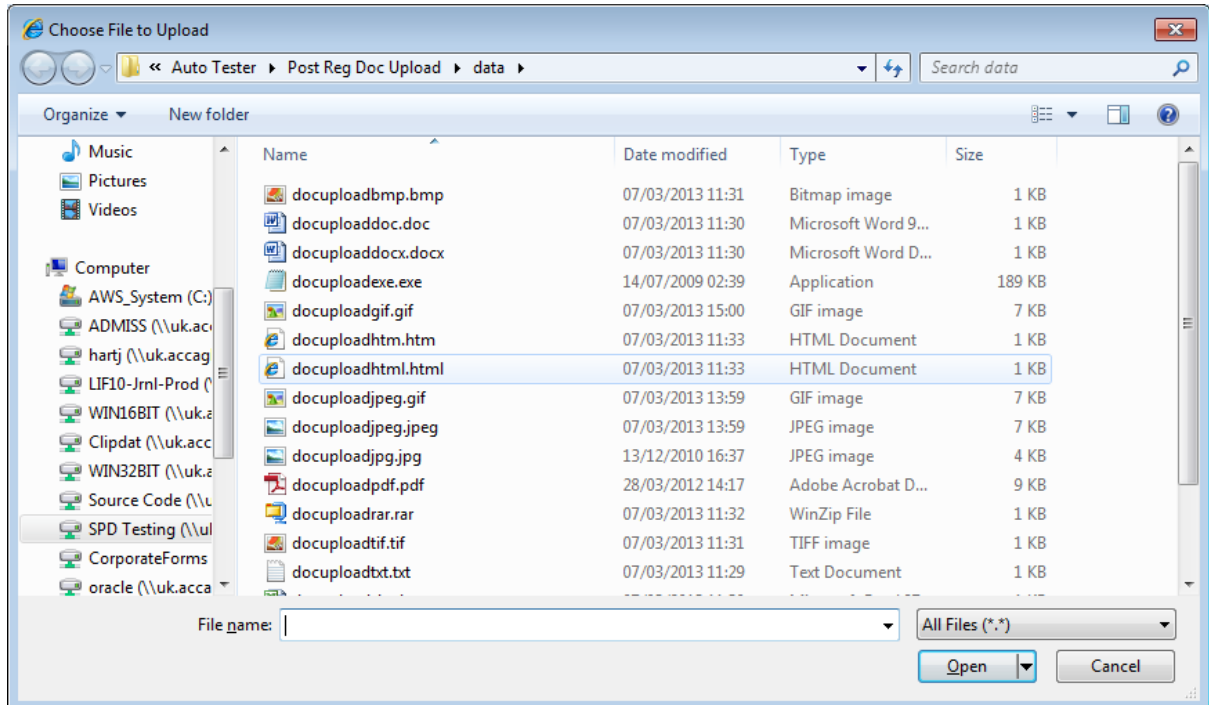
Choose Conditional exemptions from drop down menu. (should be only option on list for the moment and)



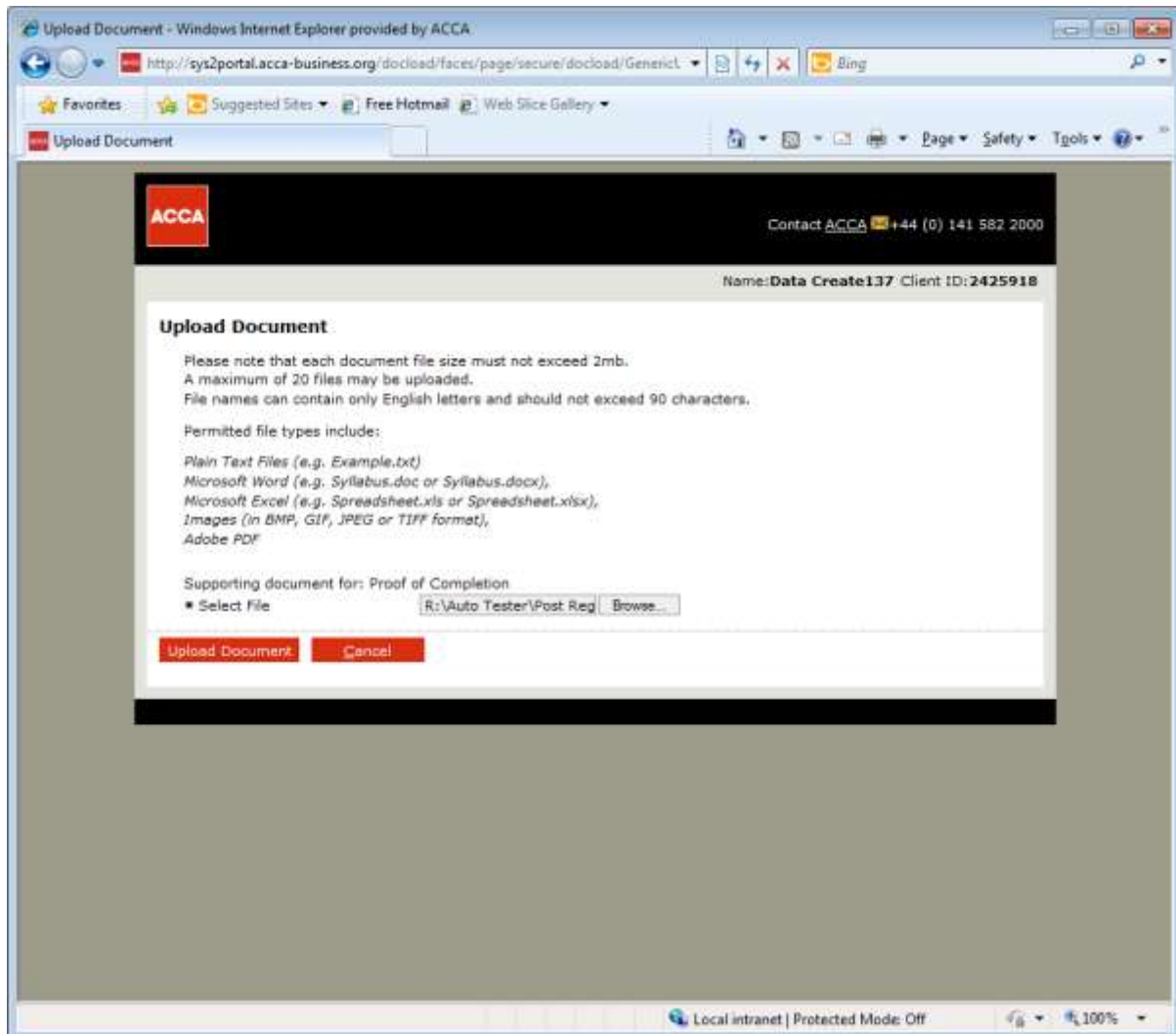
Click Add.



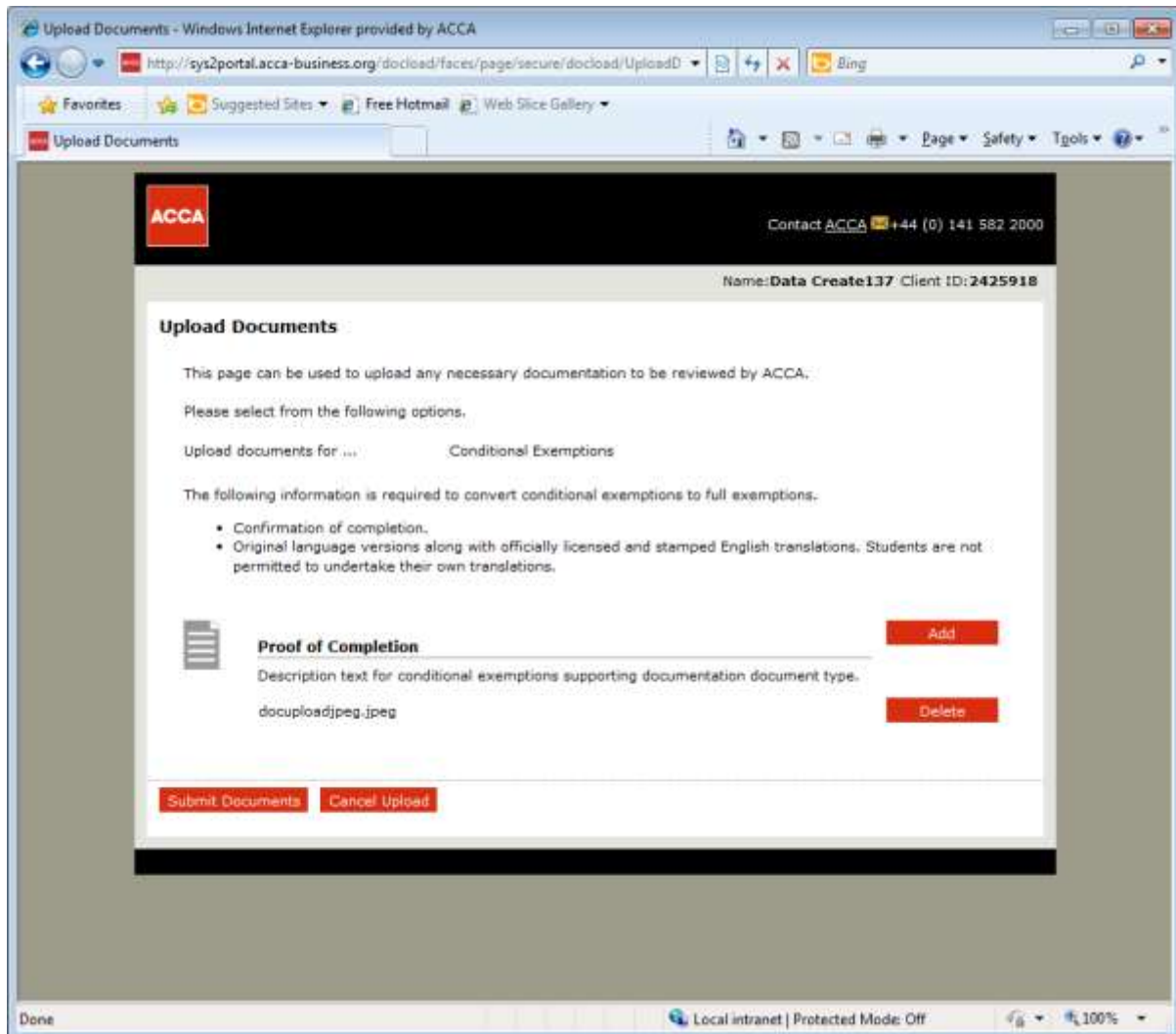
Click Browse.



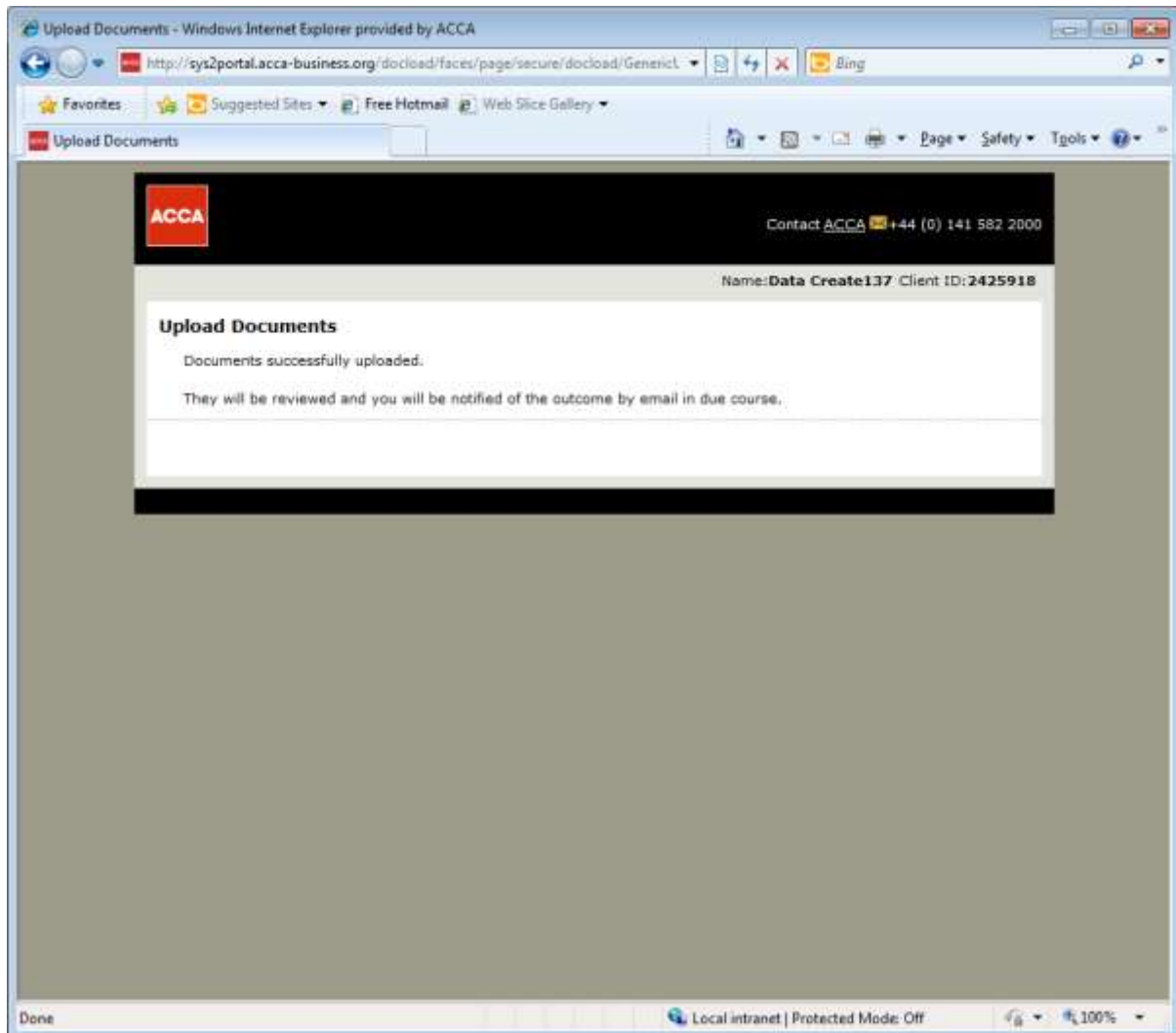
Select document



Click upload document



Click submit documents



Document upload acknowledgement screen